

1. Go to www.inclusive.co.uk/eyegaze-downloads
2. Download software and information specifically for eye gaze.
3. Enter the activation code for the software stated on your invoice/e-mail from your supplier.



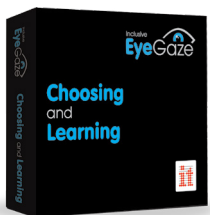
Attention and Looking

18 fun and meaningful activities that can be used with any child trying their first steps with eye gaze. They provide a progression of skills from experiential/cause and effect to targeting, ensuring early success and effective teaching whilst gathering data for teachers' analysis of students' performance, preferences and progression.



Exploring and Playing

18 fun packed games and exploring opportunities to play on your own and with friends. Assess and improve your targeting and access skills and progress from cause and effect to early choice making. Learn to take turns or do just what you want. You can even make your own music machine!



Choosing and Learning

18 activities designed to prepare eye gaze users for further communication and learning activities by developing choice making and access skills.



Eye Can Fly

The world's first magical flying adventure designed especially for eye gaze devices. Eye Can Fly is designed to give a competent user of eye gaze a highly enjoyable learning experience. Pilot your super jet on a super voyage around planet earth. Make a voyage of discovery over the farm, fly above Snappy Island in your rescue plane. Battling fires, making deliveries and saving lives!

myGaze Assistive 2 Quick Guide and EyeGaze Software Installation

1 Download and install the myGaze software

Go to forum.mygaze.com/download

Select **myGaze Assistive** from the options onscreen

Enter the following code: **myGazeA_VI**

If you have a 1st generation myGaze eye tracker

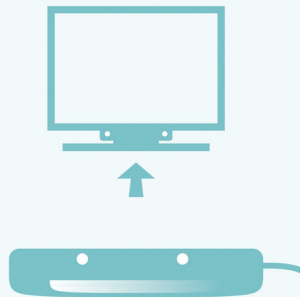
(serial number starts with MGA) enter the following code: **27LAGq51**

2 Setting Up

For PC Monitor:



Position the mounting bracket in the middle of the screen



Attach the eye tracker (USB cable on the right)

For Laptop:



Stick the ferromagnetic tape to the middle of the screen frame



Attach the 20° laptop mount over the ferromagnetic tape



Attach the eye tracker (USB cable on the right)

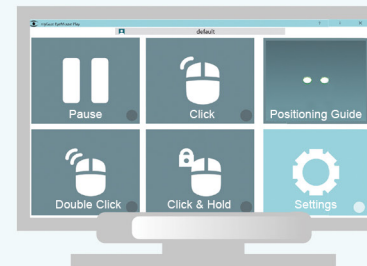
3 Calibration



Start the EyeMouse Play by double clicking on the shortcut icon on your desktop

Follow the positioning guide to adjust your position and execute calibration

4 Create Profile

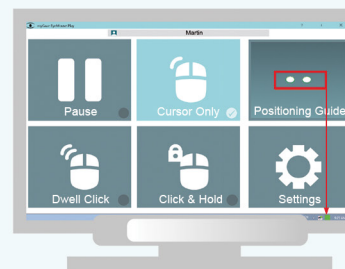


Select "Settings" in Gaze Menu



Add a profile and adjust the settings according to your preferences

5 Ready to Go!



Use visual clues to always make sure you are positioned well

Enjoy EyeMouse Play with your favourite computer programs!

For more information please refer to the Manual or Get Started video.