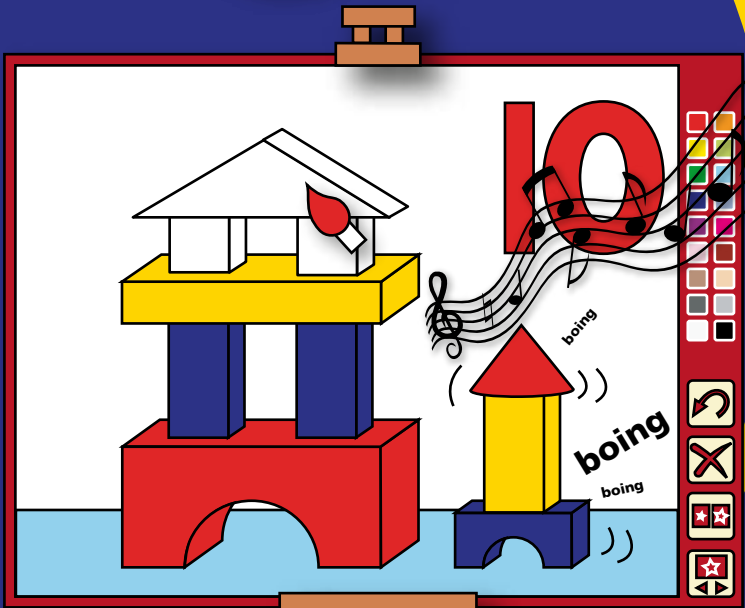
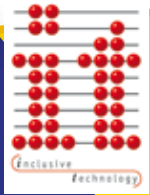




Sensory Software

1-2-3 PAINT



User Guide

Licence Agreement

1-2-3 Paint is © Sensory Software. You should have bought either a single user licence or a site licence. The following conditions apply:



Site Licence: this licence entitles you to use the program on all the machines in your establishment. You may also make backup copies of the program.



Single User Licence: this licence entitles you to use the program on any one machine. You may also make backup copies of the program.

Disclaimer

This software is supplied 'as is'. Sensory Software provides no warranty, whether express or implied, of the merchantability of the software or its fitness for any particular purpose. In no circumstances will Sensory Software be liable for any damage, loss of profits, goodwill or for any indirect or consequential loss arising out of your use of the software, or inability to use the software, even if Sensory Software have been advised of the possibility of such loss.

System Requirements

PC compatible with Windows 98, 2000 and XP.

We welcome your comments on all products from Inclusive Technology.

Inclusive Technology Ltd
Gatehead Business Park
Delph, Oldham
OL3 5BX
Tel: 01457 819790
Fax: 01457 819799
Email: inclusive@inclusive.co.uk
www.inclusive.co.uk

Welcome to 1-2-3 Paint

1-2-3 Paint is an enjoyable educational experience for everybody who likes colouring pictures, being noisy and watching fun animations.

1-2-3 Paint provides over 100 high quality pictures and over 400 related sounds.



It is switch accessible and can be used with a mouse, touch screen and overlay keyboard.



It has a high contrast mode especially for use with visually impaired pupils, and four levels with different degrees of difficulty. It is designed for use with either young pupils or for students who respond to additional stimuli.



Each painting step is accompanied by a sound to add interest, fun and motivation.



You can choose between two different colour palettes or to create your own colours through the blending option.



1-2-3 Paint includes the Copy Template function which rewards you with an animation if you have copied the image correctly.



1-2-3 Paint works especially well with a touch screen.

Installation



1-2-3 Paint must be installed from the Setup CD onto your computer's hard disc before it can be run. **This only needs to be done once.**

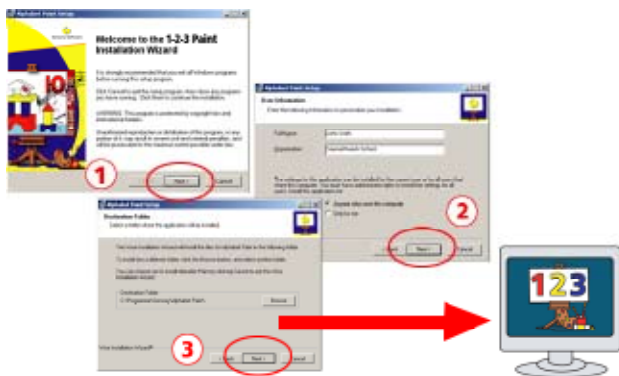
How to install 1-2-3 Paint

Insert the Setup CD into your computer's CD drive.

Select Run from the Start menu.

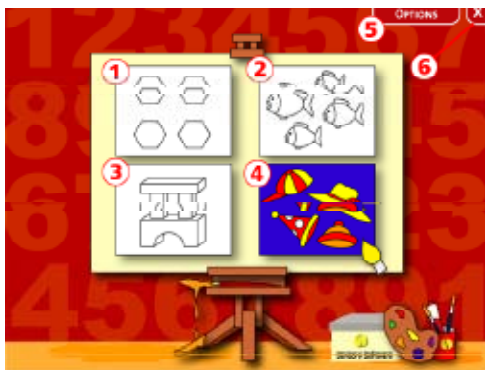
Type the letter corresponding to your CD-Rom drive, followed by “:\setup” (for example, type “d:\setup” if using the D drive) and click on OK.

The first window of the Setup screen will appear. Follow the prompts as shown below:



Getting Started

After installing **1-2-3 Paint** you can run it by clicking the **Start** button, then **Programs**, then **Sensory**, then **1-2-3 Paint**. After the introductory animation has finished, the following screen appears:



Selecting a colouring book

The following colouring books are provided:

- ① Very simple objects – maximum 6 clicks.
- ② Simple objects – maximum 8 clicks.
- ③ Complicated objects.
- ④ Scenes with more than one object with small elements.

Click on the appropriate colouring book and it will take you into the **Painting Zone** (see page 6).

If you click on ⑥ you close the program and ⑤ will take you to the **Options** screen (see page 5).

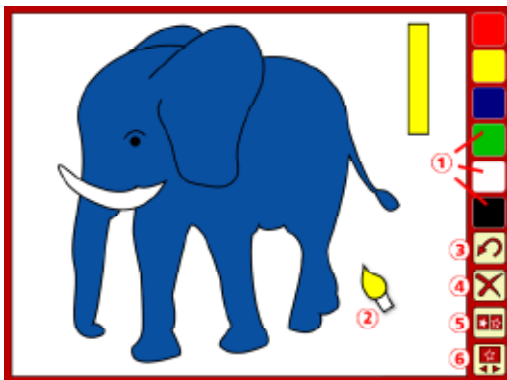
Whenever you want to return to this screen press **Escape (Esc)** on your keyboard.

Changing Settings



- ① Choose the **size of your colour palette**: 6 colours or 18 colours.
- ② **Colour blending**: this option means the colours will blend into each other as you paint (a bit like watercolours). So, for example, if an object is red and you keep adding blue (with subsequent clicks), the object will change colour from red, through purple, to blue. Similarly you can make objects lighter and darker by adding white or black.
- ③ **High contrast**: the picture will appear with white lines on a black background.
- ④ Use a **mouse**. ⑤ Use an **IntelliKeys**.
- ⑥ Use **switches**. You can select an audible **beep on step**, and set the time interval for scanning if you are using only one switch.
- ⑦ **Animate when complete** will play an animation when the picture is completely coloured in.
- ⑧ Choose **Animate when complete** and **Match colour** to play the animation when the template is copied correctly.
- ⑨ **Save picture** after you have painted an image.
- ⑩ Click **Save** to save your settings and to return to the **Select colouring book** screen.

Painting Zone



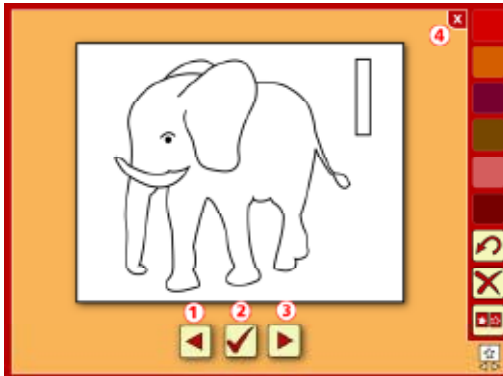
- ① Click on the **colour buttons** in the palette to select the colour you would like to paint with.
- ② The colour of the **cursor** will change according to the colour selected.
- ③ **Undo** the last step.
- ④ **Clear** the picture.
- ⑤ Click on the **show template** button to see the coloured template of your picture. Click on it again and it will disappear.



If you have selected **Animate when complete** and **Match colour** on the **Options** Screen, you will get a reward after you have copied the template correctly.

- ⑥ Click on **select image** to choose the picture you want to paint next (see page 7).

Select Image



- ① Go to the **previous picture**.
- ② **Select** the current picture.
- ③ Go to the **next picture**.
- ④ **Go back** to the **Painting Zone** without selecting a new picture.

Printing Images



If you would like to print an image, simply select it on the **Select image** screen (see above) and go back to the **Painting Zone**. Paint it or leave it as it is and press F12 on your keyboard. This function can be especially helpful for visually impaired users. You can use a bigger (printed) template if the template shown on the screen is too small.

Notes

"1-2-3 Paint is an enjoyable educational experience for every-body who likes colouring pictures, being noisy and watching fun animations. 1-2-3 Paint provides 120 high quality pictures and over 400 related sounds."



Switch accessible:

It is switch accessible and can be used with mouse, touchscreen and overlay keyboard.



High Contrast Mode and Four Levels:

It has a high contrast mode especially for use with visually impaired pupils, and 4 Levels with different degree of difficulty.



Painting + Sound:

Each painting step is accompanied by a sound to add interest, fun and motivation.



Copy Template Function:

1-2-3 Paint includes the Copy Template function which awards you with animation if you have copied the image correctly.



Blending Colour Option:

You can choose between two different colour palettes and have the possibility to create your own colours through the blending option.

Inclusive Technology Ltd

Riverside Court . Huddersfield Road . Delph. Oldham . OL3 5FZ

Tel: 01457 819790 . Fax: 01457 819799

Email: inclusive@inclusive.co.uk . Web: www.inclusive.co.uk



© Sensory Software Ltd, 2005